

**Gove Communities - Box Hill NSW 2765**  
**LOT 10 - Bissoka 13**

# House & Land Package

3

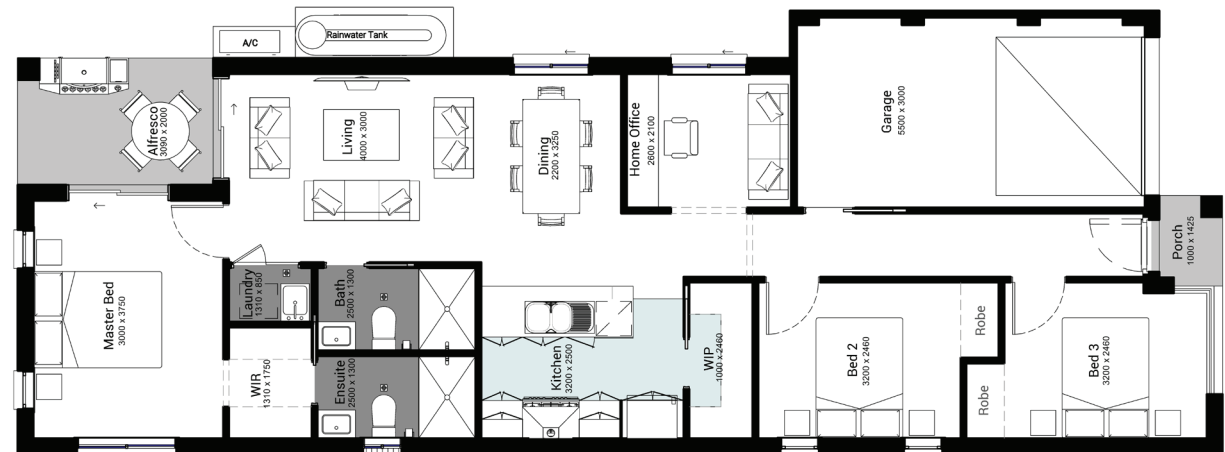
2

1



**\$634,090**

The Bissoka series is perfect for young families and downsizers! Equal on a narrow block, the home caters all the pleasant moments for the emerging family in this clever design. Provided to you in three plans to choose from, this private and generous home will create an enlightening aura for you and your loved ones.



## Enquiries

a a  
a

**Land**

**232.6 m<sup>2</sup>**

**House**

**121.25 m<sup>2</sup>**

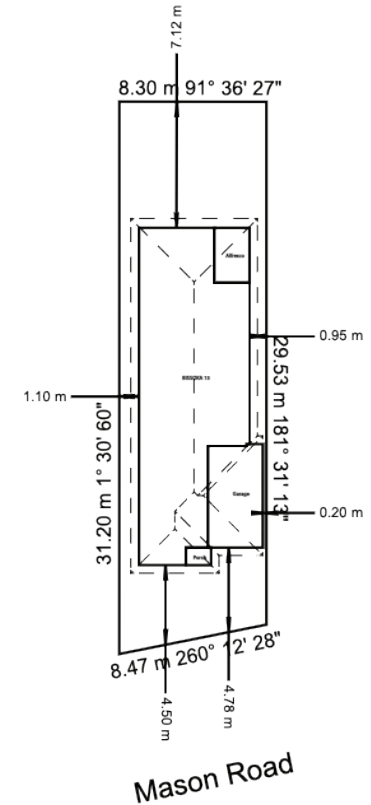
Gove Pty Ltd is not responsible for the sale of land and cannot warrant the variables based on land. Build cost based on Edge Specifications. Images displayed in this document are for illustrative purposes only. Full details available at tender. Package subject to availability. Driveway, A/C and Rainwater Tank location indicative and may change as per the site conditions. Copyright Gove Pty Ltd.



**GOVE**



## Bissoka



### Enquiries

a a  
a

Land 232.6 m<sup>2</sup>

House 121.25 m<sup>2</sup>

Gove Pty Ltd is not responsible for the sale of land and cannot warrant the variables based on land. Build cost based on Edge Specifications. Images displayed in this document are for illustrative purposes only. Full details available at tender. Package subject to availability. Driveway, A/C and Rainwater Tank location indicative and may change as per the site conditions. Copyright Gove Pty Ltd.



**GOVE**

